

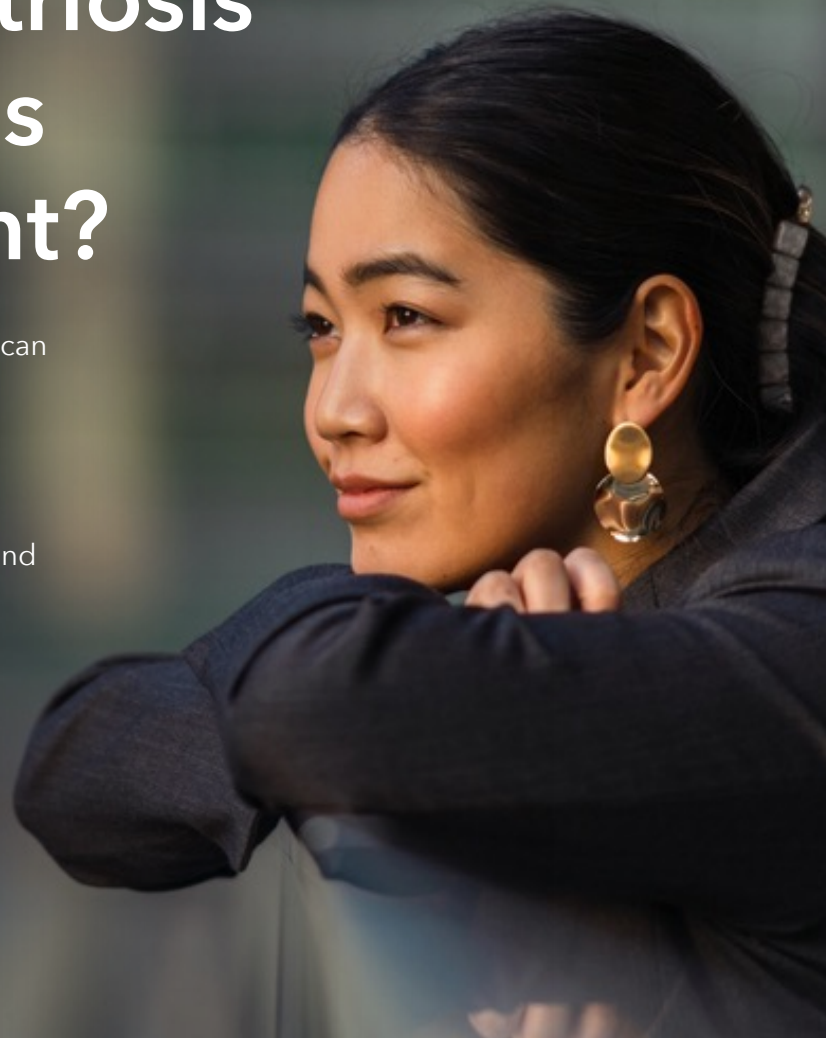


# Why is an endometriosis diagnosis important?

An endometriosis diagnosis can help you understand what's happening in your body.

Diagnosis can help:

- Validate your symptoms and your experiences
- Stop or slow disease progression
- Reduce isolation



To learn more visit:  
[yourperiod.ca/endometriosis](https://yourperiod.ca/endometriosis)

